



EXEDY (Thailand) Co.,Ltd.

Tool and Die Business Profile.

About Us

EXEDY is one of leading company of Drivetrain parts manufacture in world wide. We deal with Automobile and Motorcycle manufacturer in Thailand.

1st, 2nd, 3rd Plant



4th Plant



Established 23. Dec, 1994

Sales Result(FY2020)

5.8Billion THB (164Million USD)

Employee(25th Dec,2021)

1,238 persons(11 Japanese)

Stock Holder

EXEDY Corporation 67%

Siam Auto Parts 33%

Location

Amata City Chonburi (Thailand)

Our Products

- Drivetrain parts sales business

MT

Clutch Disk



Clutch Cover



AT

Torque Convertor



2R

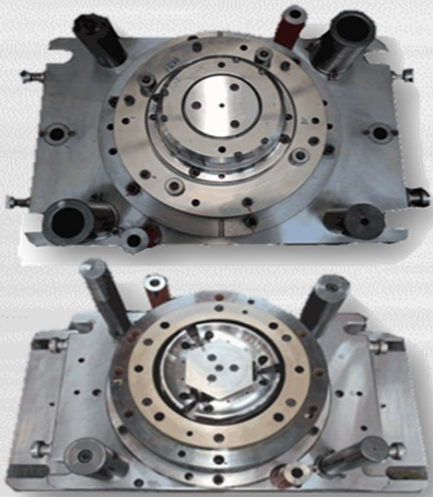
Multi Plate Clutch Assy



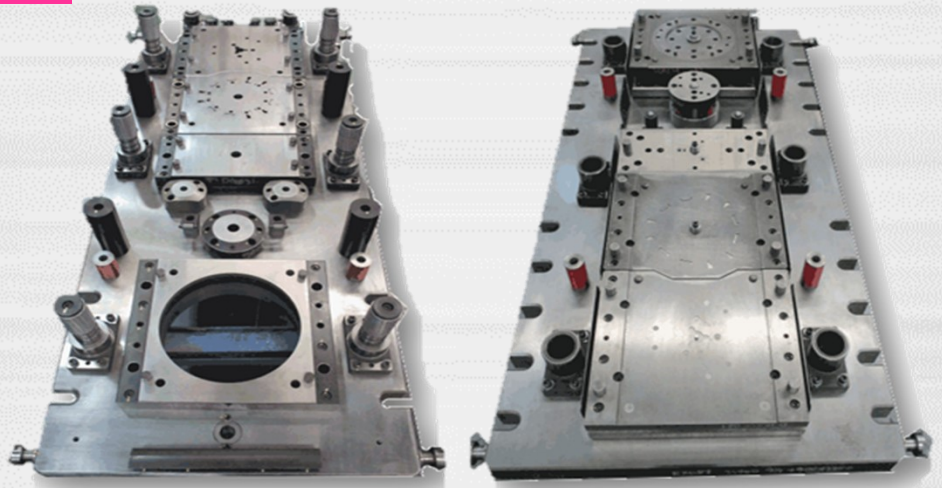
CVT Assy



Die Sales Business



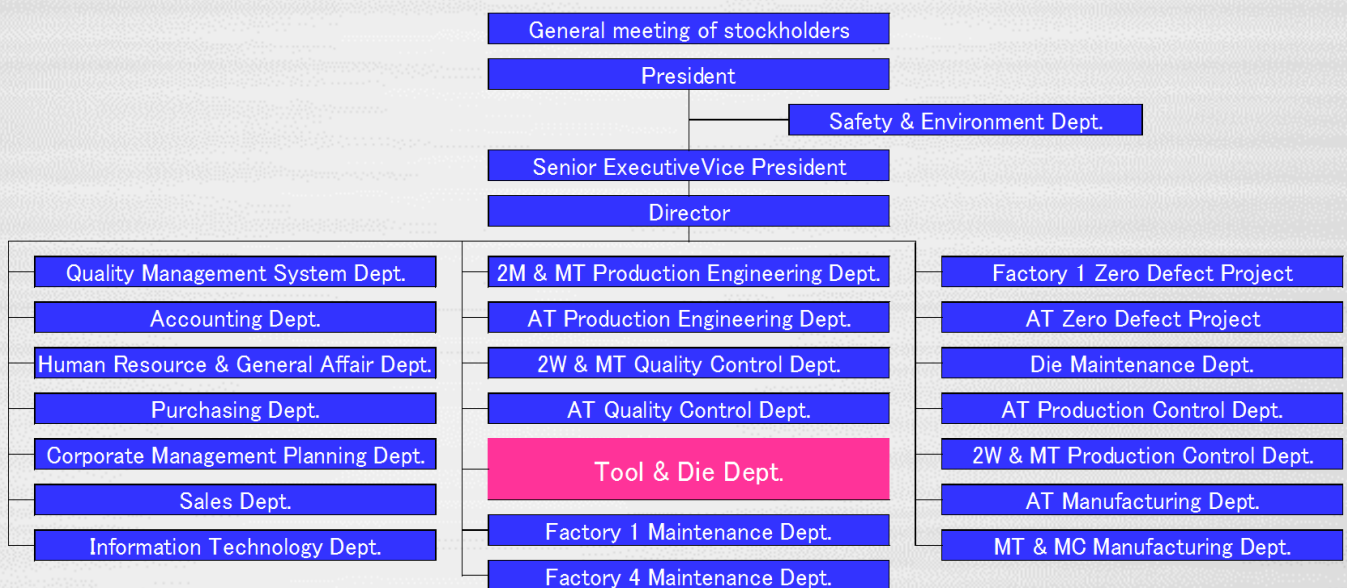
Single Die



Progressive Die

EXEDY (Thailand) Organization

Tool and Die department are make new model Die and prototype Die.



T&D Dept. Employees Number

T&D Personnel Total 45 Peoples

- Production team 34 peoples
- Design team 9 peoples
- Management 2 peoples (Maneger, Senior Assistant Manager)

Production Capacity

Die 200 sets /year

Excellent & Dyna

- Our Core St

We can try press forming with our servo press trial machine.

Reduce of trial time and cost at your company.



Long experience of
meets customer q
ments. We carry o
Press forming ana

“High Precision Die”
For Customers

EXED

We m

And v

amic Die Making

Strength



Polishing process by special skill employees for long tool life.

of Die making that
quality require-
ut Die design and
alysis in Thailand.



Y Tool& Die department is an expert of Die making.
ake high quality Dies that based on 20 years of experience.
ve support **High Precision Die** for our customers.

Consistent Die Making Flow

We have been making Die with a consistent flow from design to trial.

T&D has a 600tons prototype servo press machine.

We are strengthening the flexibility of die production and prototype trials.



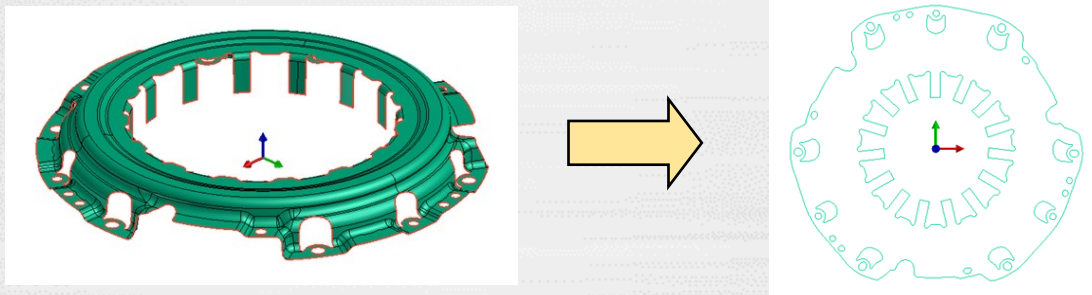
T&D are making dies in Thailand. Our engineers can go immediately when Die trial in your company or a Die trouble occurs.

We satisfied not only quality of Die parts but also quality of press parts .

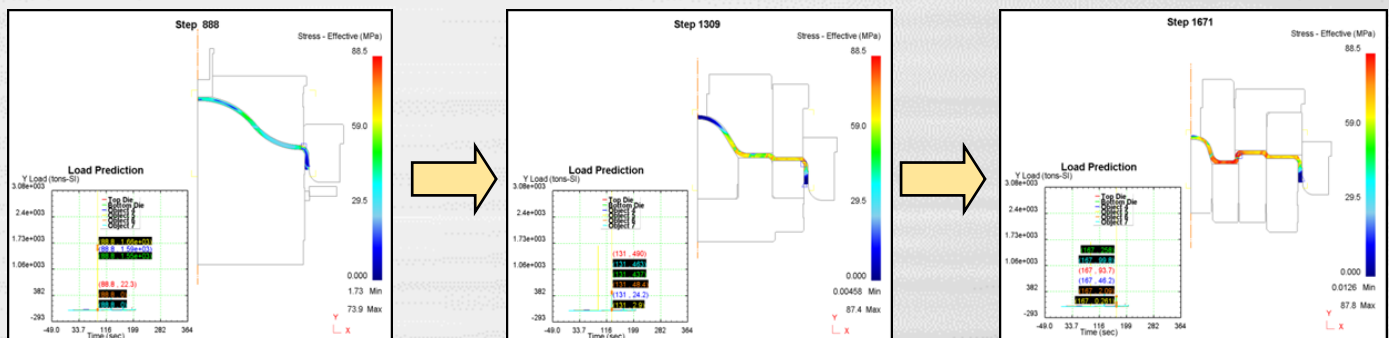
Press Forming Analysis Example

We can perform the analysis and reduce the die cost and lead time.

■ Blank shape analysis.



■ Press forming analysis for thickness reduction and crack confirmation.



Press Parts Making Example

■ In-house Die Stamping parts



Clutch Cover



Clutch Drum



Retaining Plate

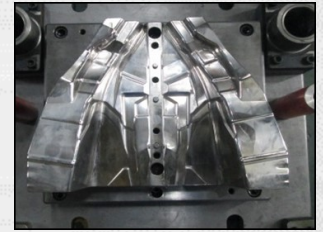


Outer Body

■ Outside sales Die Stamping parts



Door Window (All 4 sets)



Body Booster (All 10 sets)



Plate Pressure (All 9 sets)

T&D made Die more than 100 sets for our customers in Thailand.

Our Facility

■ Design Facility

- CAD System
 - Auto CAD (2D) -----15 units
 - Catia, NX (3D) -----6 units
- Deform System -----1 unit

■ Production Facility

- Machining Center -----4 units
- Wire Cut Machine -----8 units
- Electric Discharge Machine-----1 unit
- Surface Grinding -----3 units
- CNC Lathe-----3 units

■ Trial/Inspection Facility

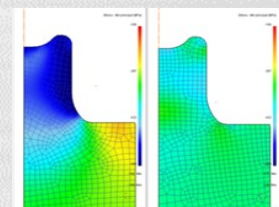
- Coordinate Measuring Machine -----1 unit
- 3D Scanner Measuring (Digitizer) -----1 unit
- Trial Press Machine KOMATSU H2F600-B
600Ton Servo-----1 unit



CAD System



Wire Cut Machine



2D Deform System



High Speed
Machining Center

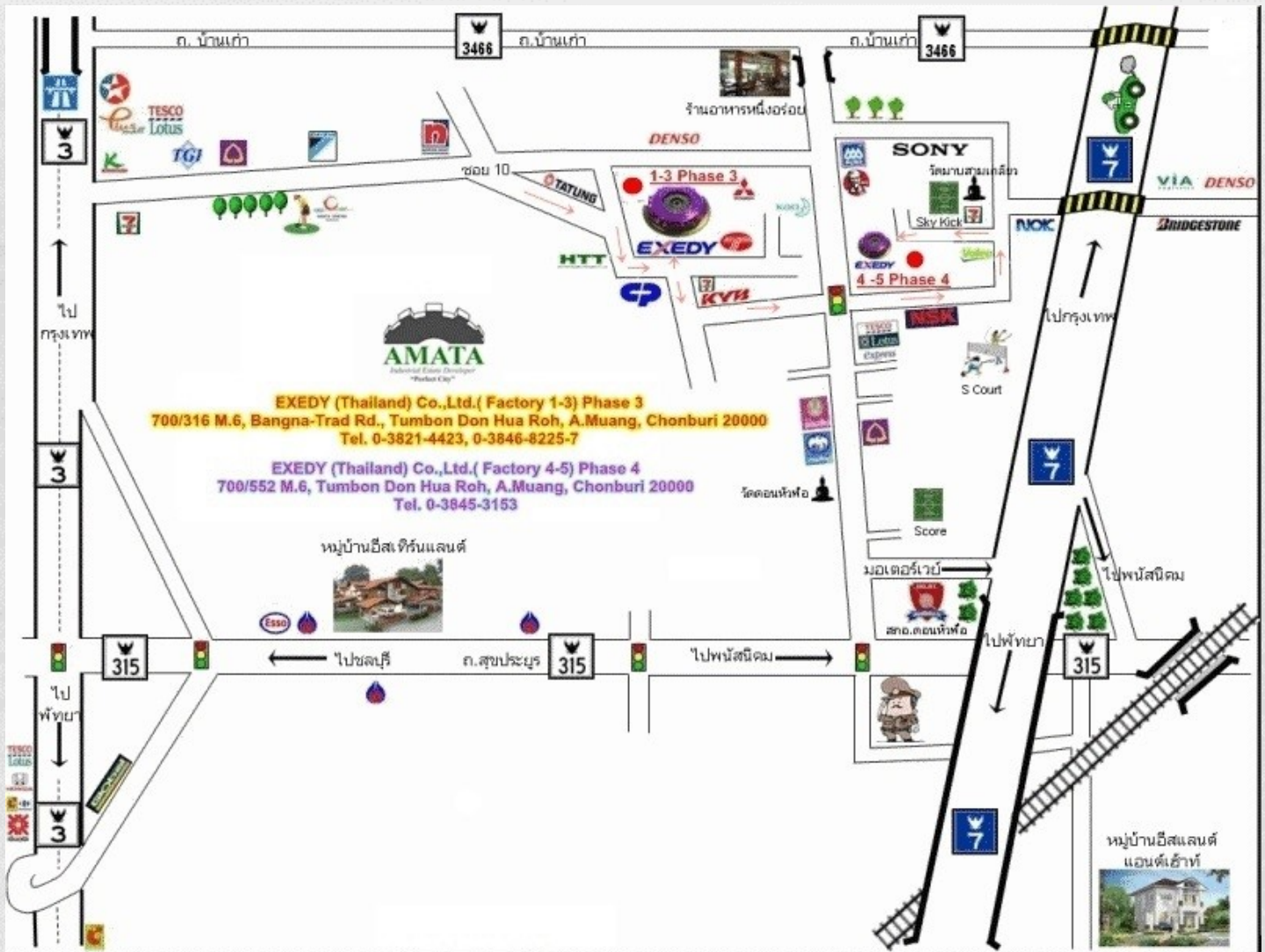


3D Scanner
(Digitizer)



Trial Press Machine
600Ton Servo

Map



Contact



EXEDY (Thailand) Co., Ltd.

700/316 Moo 6 Bangna-Trad Rd., Tambon Don Hua Roh, Amphur Muang ,Chonburi
20000, THAILAND

Phone: +66-(0)-38-214-423-5, +66-(0)-38-468-225-7 ext.124



Manager

Wanlop Wuttiaphatamorn

Tel: +66-(0)-84-565-4466

E-mail: wanlop@exedy.co.th



Assistant Manager

Yutaro Tamagawa(Japanese)

Tel: +66-(0)-61-386-8541

E-mail: y-tamagawa@exedy.com